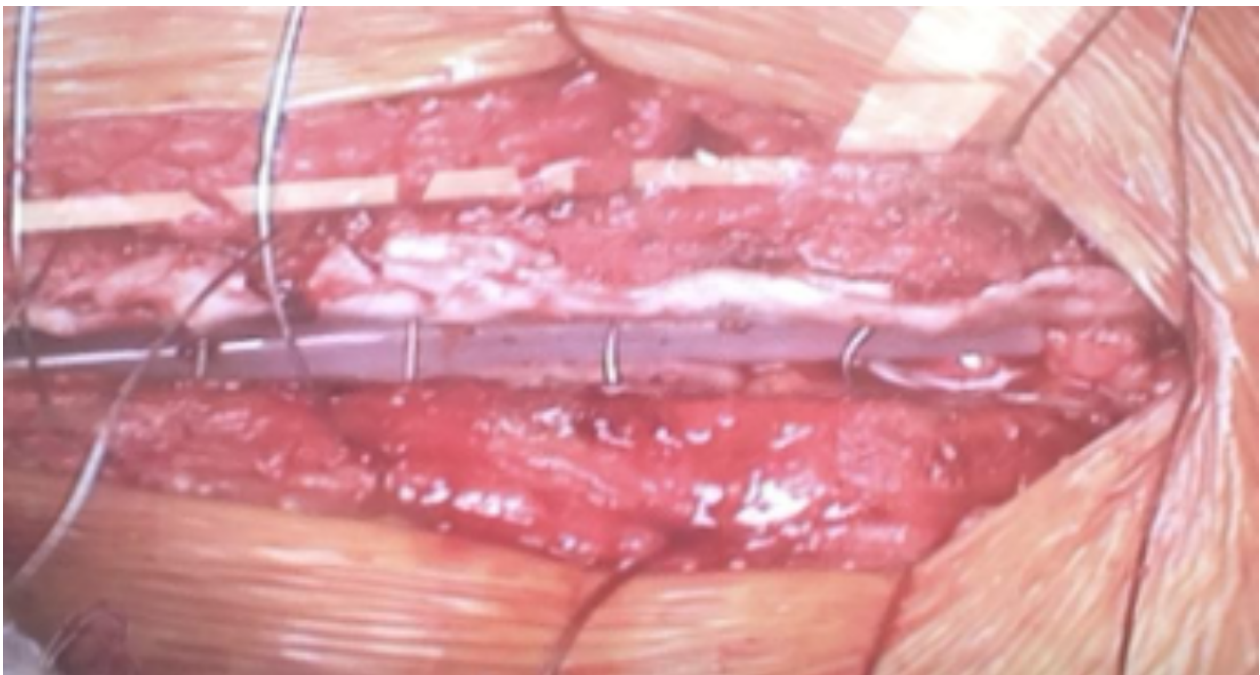


## Compression by Anatomy

Ensure the Guide Tube and Chest Tube are aligned as straight as possible, then slide the Shuttle Guide over the internal magnet to recouple and slowly reattempt. If decoupling continues to occur when the Clearance Wire and Loop are in proximity to the parked position, continue using the device if:

- It is not possible to click the Shuttle Guide into the proximal barb housing to park the Clearance Wire and Loop in the proximal end of the Chest Tube, and;
- There is no resistance to wire movement inside the chest tube distally to the point of decoupling.



## Possible Clot Formation

During retraction, a clot may be occluding normal passage of the clearance wire and loop. If decoupling persists during retraction, slide the shuttle guide over the internal magnet to recouple and return to the parked position. Communicate the location of the decoupling to the ICU.

### **Tips**

If the internal and external magnets become uncoupled, advance or retract the Shuttle Guide over the internal magnet to recouple.

Retaining elements set on the internal magnets will keep the internal magnets and wire from exiting the Guide Tube, thus encouraging recoupling of the magnets.

---

If decoupling occurs when the Clearance Wire and Loop are in proximity to the Parked Position, the Clearance Wire and Loop can continue to be used even if the Shuttle Guide does not fully click into the Parked Position.



If after several attempts the magnets remain uncoupled, the PleuraFlow Guide Tube may be disconnected from the PleuraFlow Chest Tube. The Chest Tube may then be connected to the drainage tubing and canister in the standard fashion.

---

If decoupling occurs when the Clearance Wire and Loop are in proximity to the parked position, continue using the device if:

- It is not possible to click the Shuttle Guide into the proximal barb housing to park the Clearance Wire and Loop in the proximal end of the Chest Tube, and;
- There is no resistance to wire movement inside the chest tube distally to the point of decoupling.



**Withdrawing/Retraction:** If decoupling persists during retraction, slide the shuttle guide over the internal magnet to recouple and return to the parked position. Communicate the location of decoupling to the ICU.

**Advancing/Parking:** If decoupling persists during advancement, slide the shuttle guide over the internal magnet to recouple and retract the clearance wire out of the chest tube, leaving it in the guide tube. Notify the ICU of the position of the Shuttle Guide and communicate the location of decoupling.

